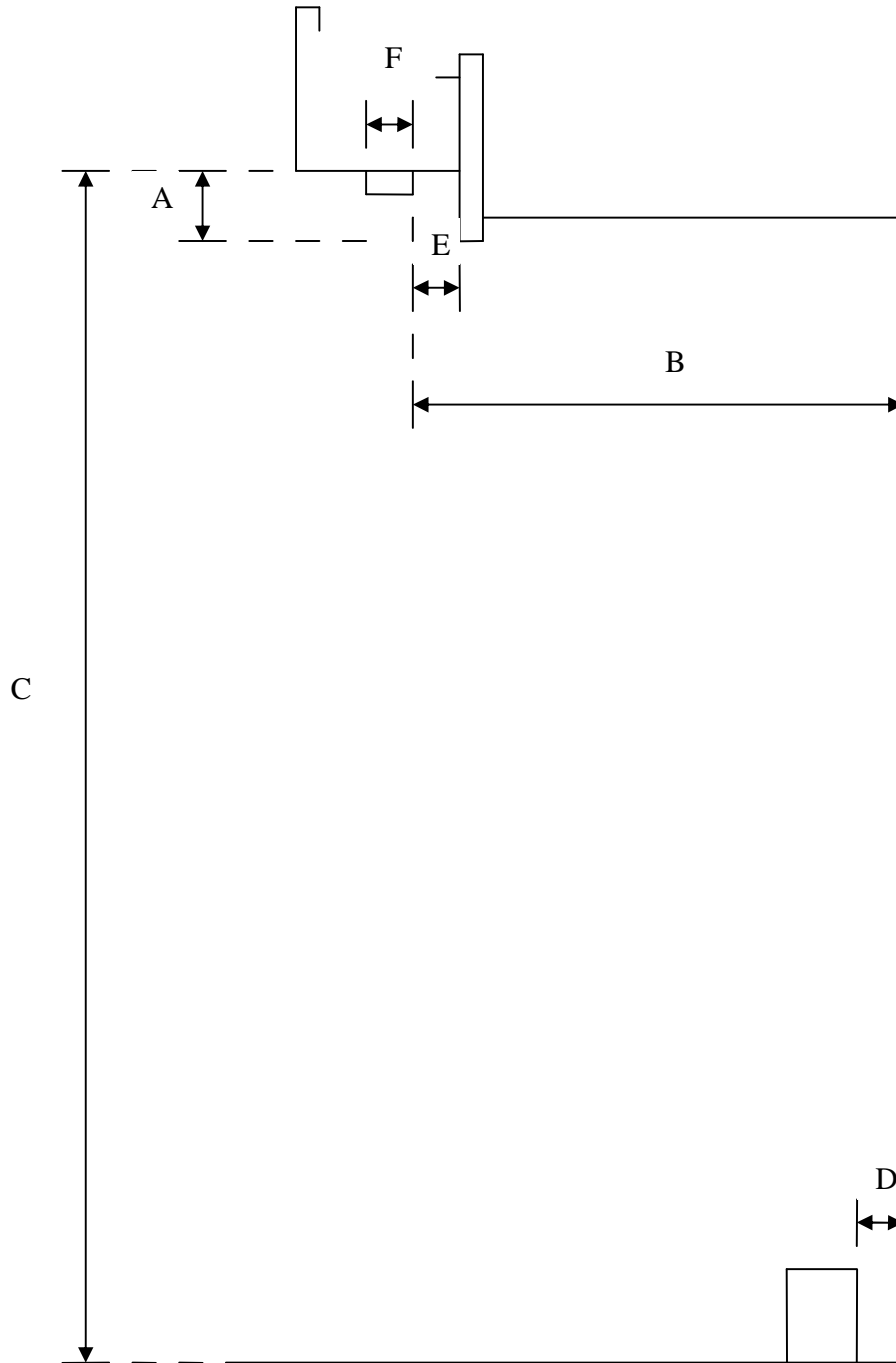


## DOWNPIPE MEASUREMENT REQUIREMENTS



Note A Bottom gutter to bottom fascia

Note B Back of outlet to wall minus standoff

Note C Bottom gutter to ground level

Note D Standoff

Note E Back of outlet to fascia

Note F Outside diameter of outlet NB 74mm fits directly into round pipe without need of flanging

NB Include measurement if using square pipes as requirement is 95mm x 48mm outside diameter

Delta Roofing & Manufacturing Ltd  
Tel 07 847 5197  
Fax 07 845 0545

## **EXPLANATORY SHEET DOWNPIPE MEASUREMENTS**

### Column A

Bottom Gutter to bottom Fascia in MM

Required so that we can set the first bend to fall close as possible under the fascia.

### Column B

Back outlet to wall minus standoff in MM

Required so that we can set the pipe centers to allow for brackets to match the standoff riser dimension.

### Column C

Bottom Gutter to Ground level in MM

Required so that we can make the pipe length equal the wall height you have.

### Column D

Standoff in MM

Risers are meant by code of practice to be set at 40mm from the wall. Unfortunately drainlayers have difficulty measuring. You must in the customer interest ask if the riser can be moved to 40mm easily as this is the best option to keep the pipes even off the wall but in the event they are concreted in we can modify the brackets to suit.

### Column E

Back of the outlet to Fascia in MM

We can set the downpipe as far out from the fascia as possible with this measurement. This keeps the pipe set closer up to the soffit as possible.

### Column F

Outside Diameter of outlet.

There are some six types of 80mm round outlets. They vary in outside diameter from 74mm to 82mm. A 74mm outlet fits straight into our pipe without flanging out the top which is an extra charge. We supply 74mm outlets extremely cheaply and other suppliers have 74mm outlets for ready supply.

The outside diameter of square outlet for the rectangular pipe has to be no bigger than 95mm x48mm.

Please call Peter Barrett 021843387 for any assistance with these instructions.